

# SOP of Fixed Asset Cycle

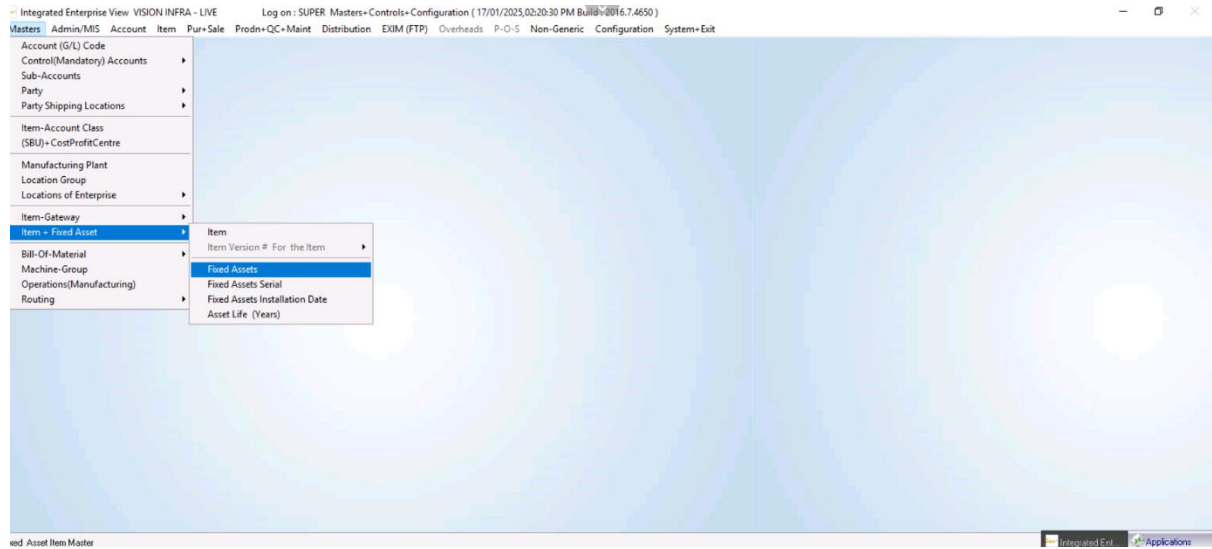
## Index

1. Master creation
  - Steps
2. PO creation
  - Steps
3. GRN
  - Steps
4. Inspection
5. Installation Date

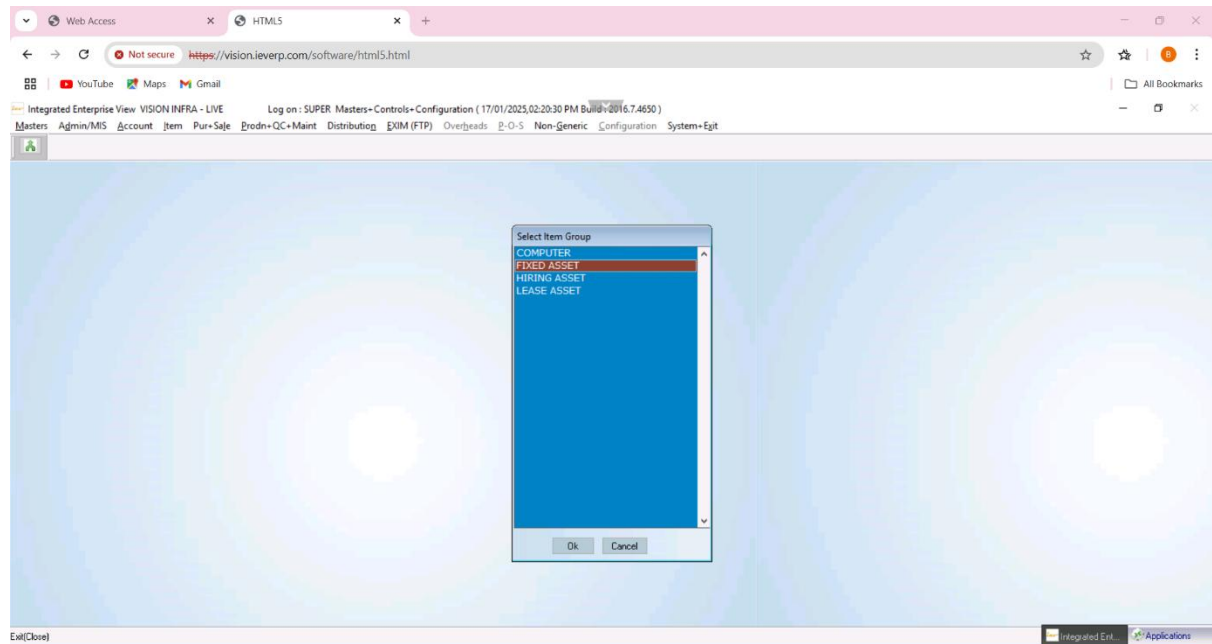
# SOP of Fixed Asset Cycle

## Fixed Asset Item Creation

Path ->

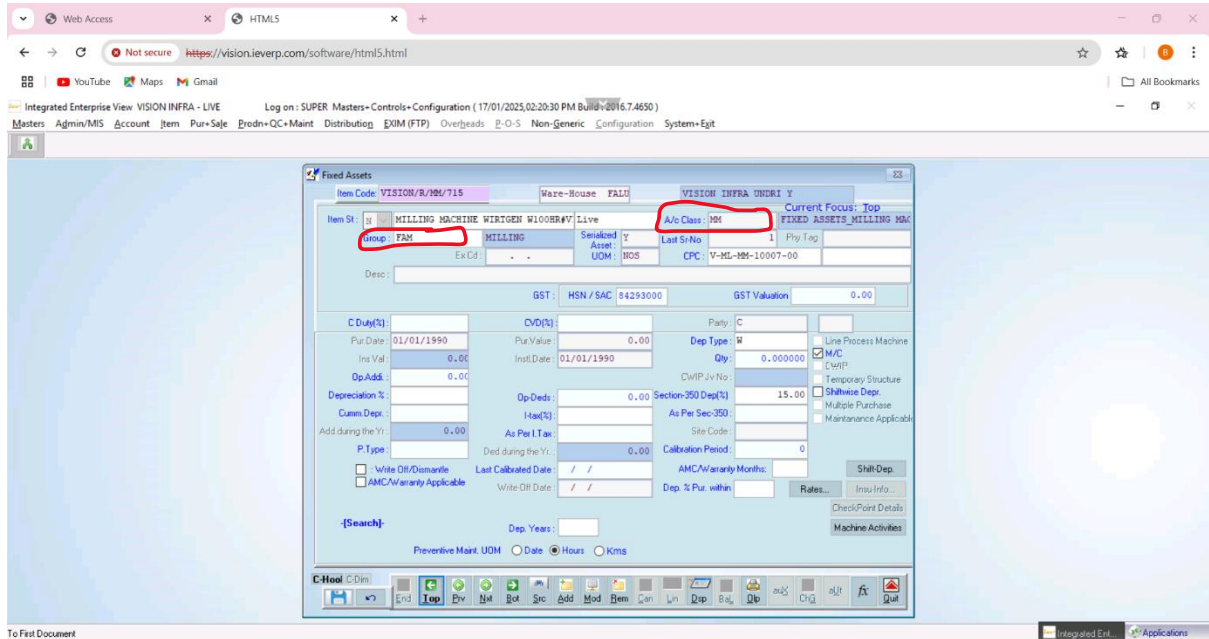


## Select Proper item group



# SOP of Fixed Asset Cycle

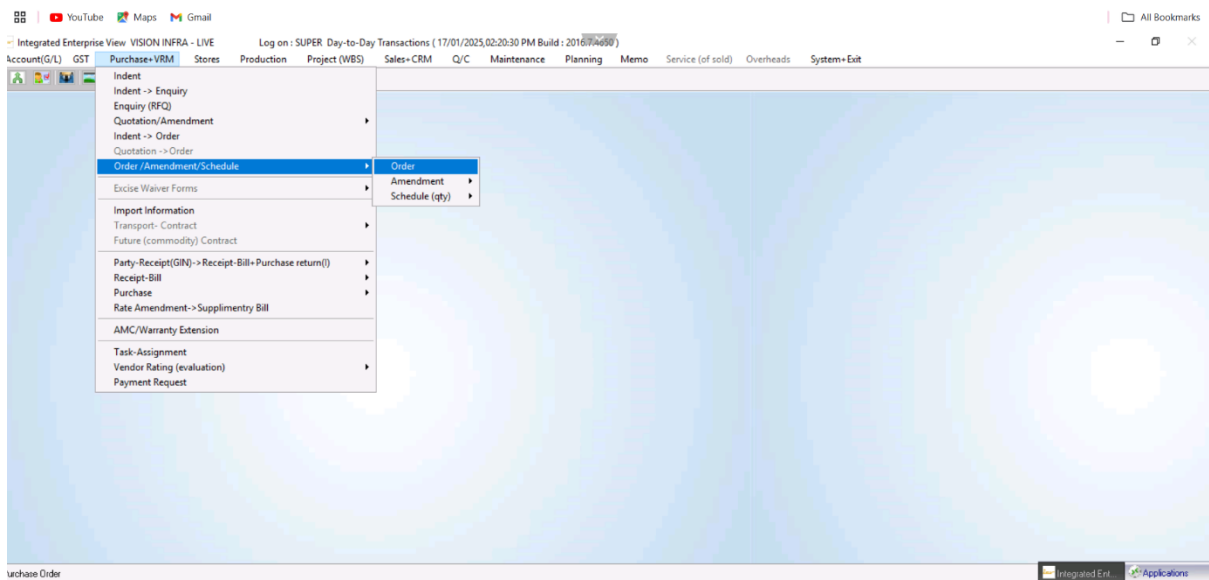
Fill correct fixed asset details with confirmation to finance department.



C-hook details

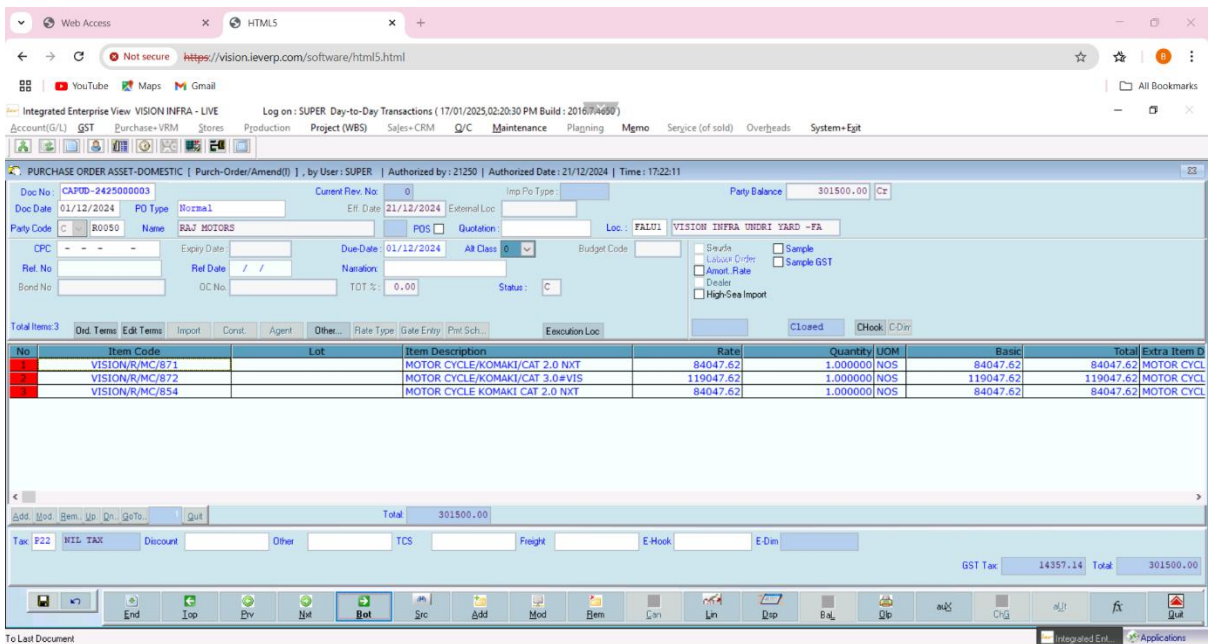
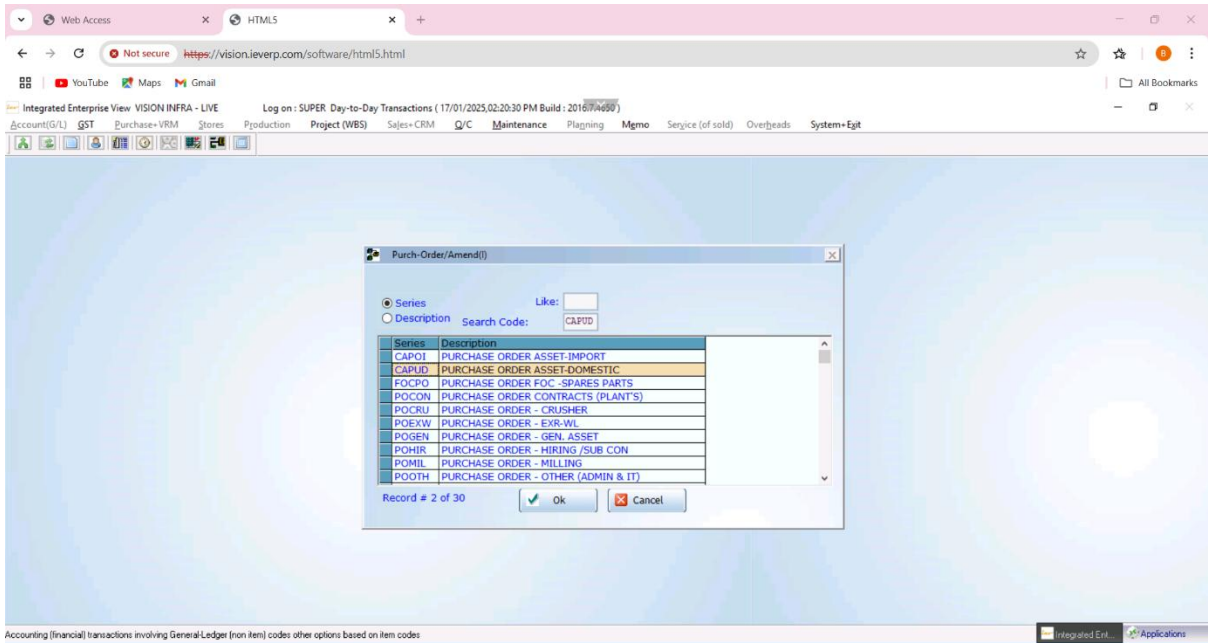
Fixed Asset PO creation

Path->

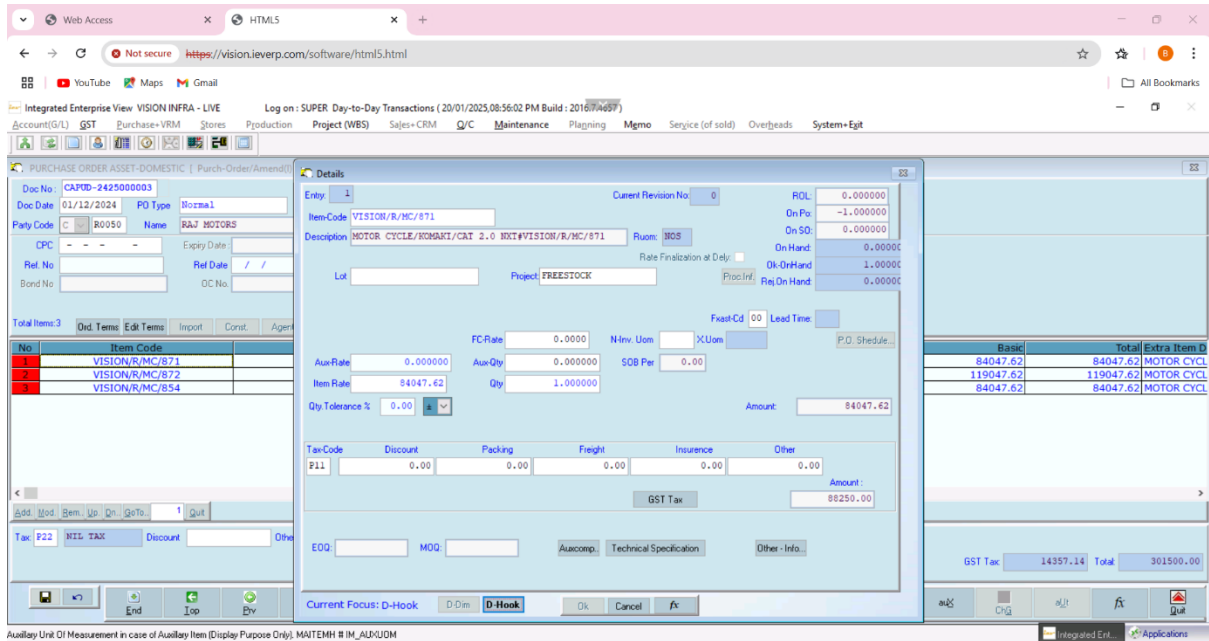


Select correct description

# SOP of Fixed Asset Cycle



# SOP of Fixed Asset Cycle



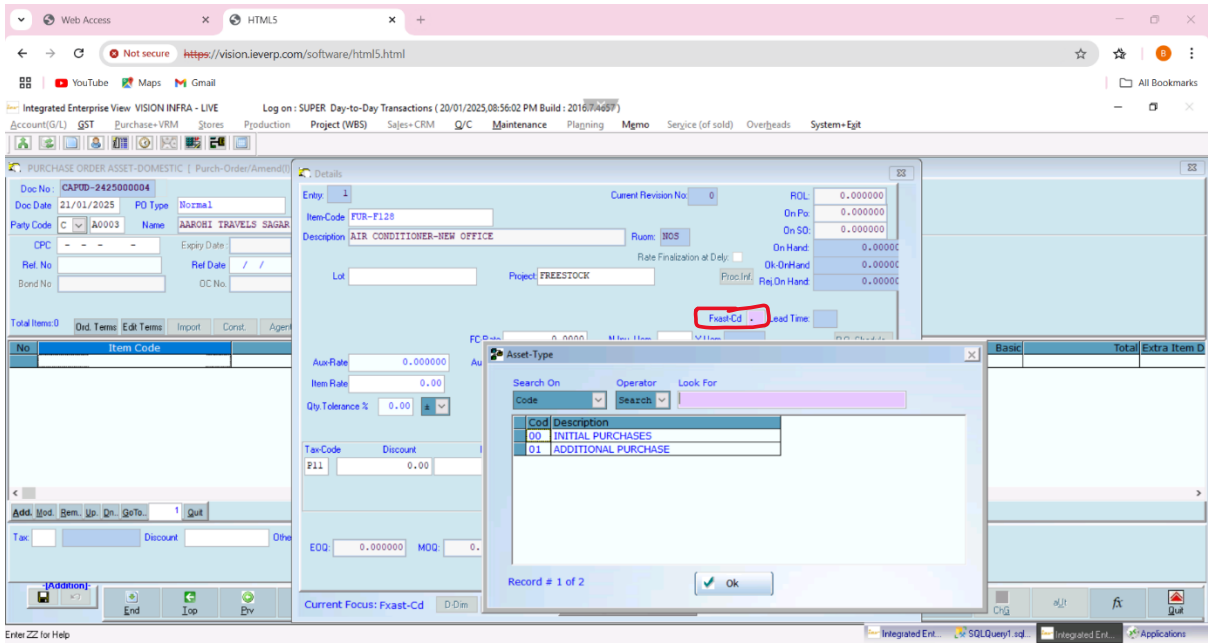
After selecting item code and project no user has to enter **Fcast- Cd**.

Note->

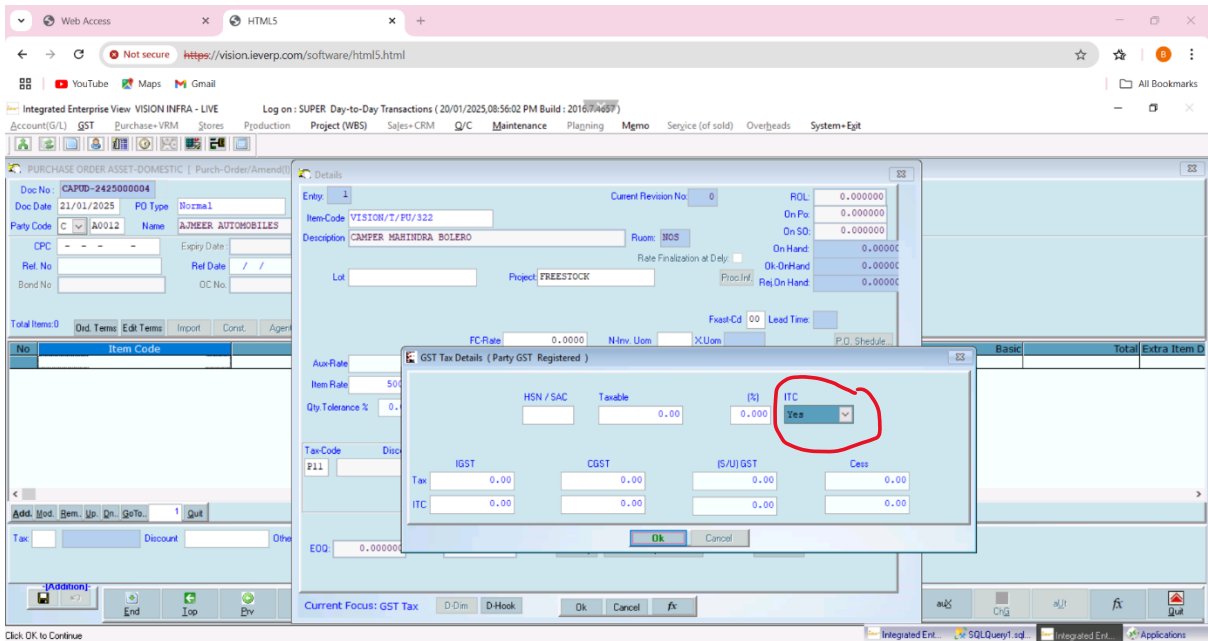
00- stands for initial purchase i.e. asset is being purchased for 1<sup>st</sup> time

01- stands for additional purchase i.e. asset is purchased and some additional exp to be loaded on that particular asset (e.g. spare parts)

# SOP of Fixed Asset Cycle



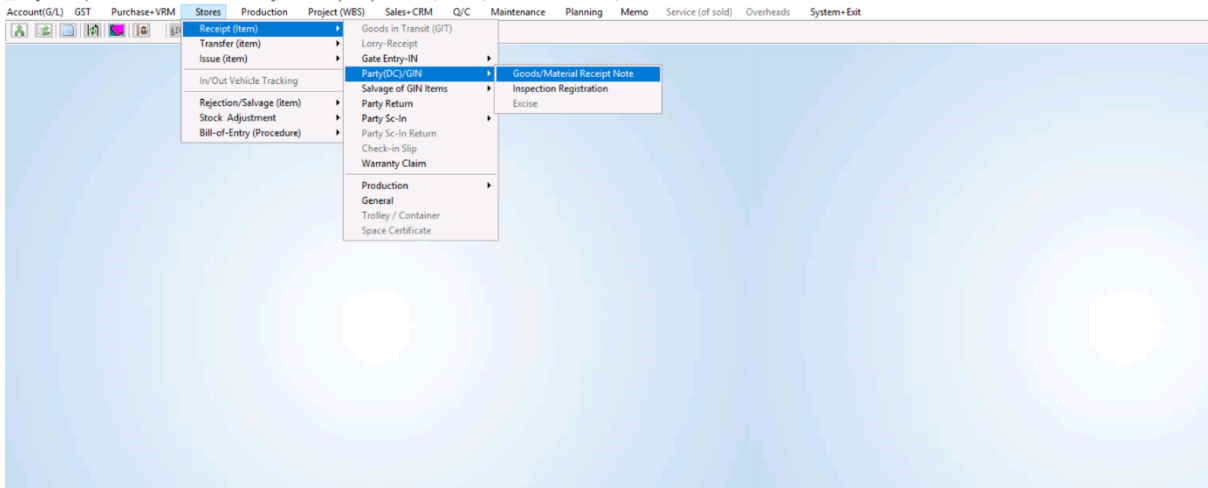
As per GST rule, for some items GST is applicable but Credit is blocked. In this case user has to select ITC as NO and select the reason code



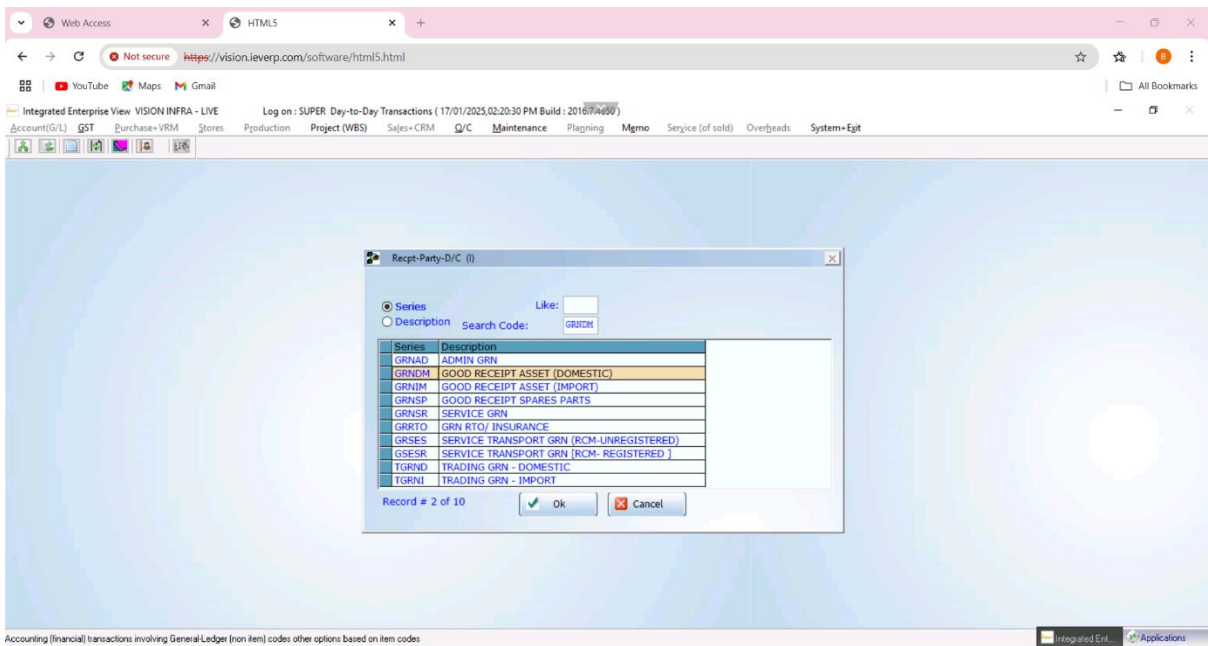
GRN

Path->

# SOP of Fixed Asset Cycle



## Select correct description



# SOP of Fixed Asset Cycle

GOOD RECEIPT ASSET (DOMESTIC) | Recpt-Party-D/C (0) | by User:21046 NIKHIL VIRENDRA CHAV

Doc No: GRNDM-242500003 Doc Date: 18/12/2024

GRN Type: Normal Non-Billable:  Busi:  POS:  Ship Ref: RAJ MOTORS

Ref No: 2324-174 Ref Dt: 18/12/2024 Loc: FALDI1

Navigation: To: CPC: V-GA-GA-21207-00

No	Item Code	Description	Lot	Inspe	Bill-Qty	Acc-Qty	Rxd-Qty	Rej-Qty
1	VISION/R/MC/872	MOTOR CYCLE/KOMAKI/CAT 3.0#VISION/R/MC		Yes	1.000000	1.000000	1.000000	.000000

Add: 125000.00

Inspected:  E-Hook:  E-Dim:

GST Tax: 5952.38 Total: 125000.00

GOOD RECEIPT ASSET (DOMESTIC) | Recpt-Party-D/C (0) | by User:21046 NIKHIL VIRENDRA CHAV

Doc No: GRNDM-242500003 Doc Date: 18/12/2024

GRN Type: Normal Non-Billable:  Busi:  POS:  Ship Ref: RAJ MOTORS

Ref No: 2324-174 Ref Dt: 18/12/2024 Loc: FALDI1

Navigation: To: CPC: V-GA-GA-21207-00

High Sea Imp:  Tran Infr:  Others:  Import:  Posted:

A/C Code	Division	Debit Amount	Credit Amount	A/C Description
A0323002		2976.19	0.00	Cgst - Interim Inward Supply Ac
A0323003		2976.19	0.00	Sgst - Interim Inward Supply Ac
L0306252		0.00	5952.38	Supply In Challan Ac

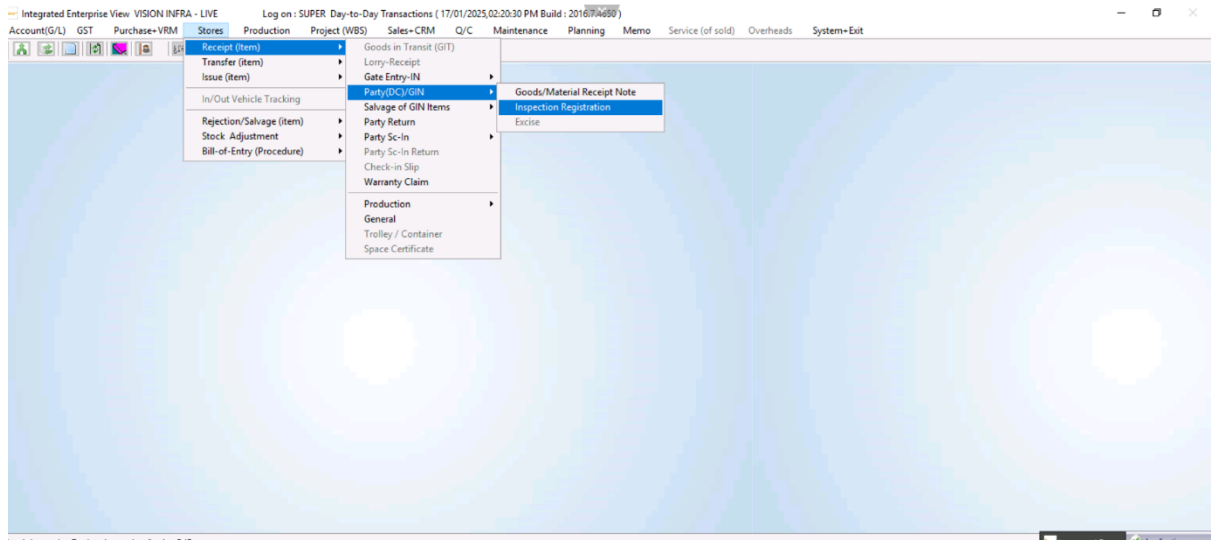
Total: 5952.38

Account Description: Cgst - Interim Inward Supply Ac Debit: 5952.38 Credit: 5952.38

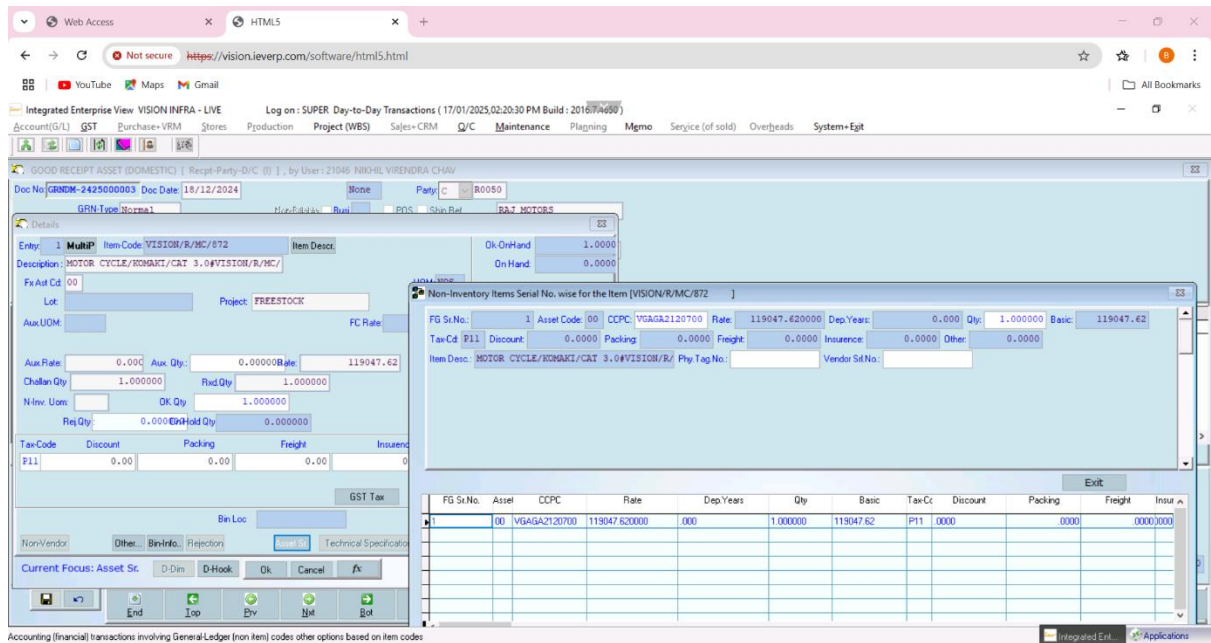
Accounting (financial) transactions involving General Ledger (non item) codes other options based on item codes

# SOP of Fixed Asset Cycle

## Inspection



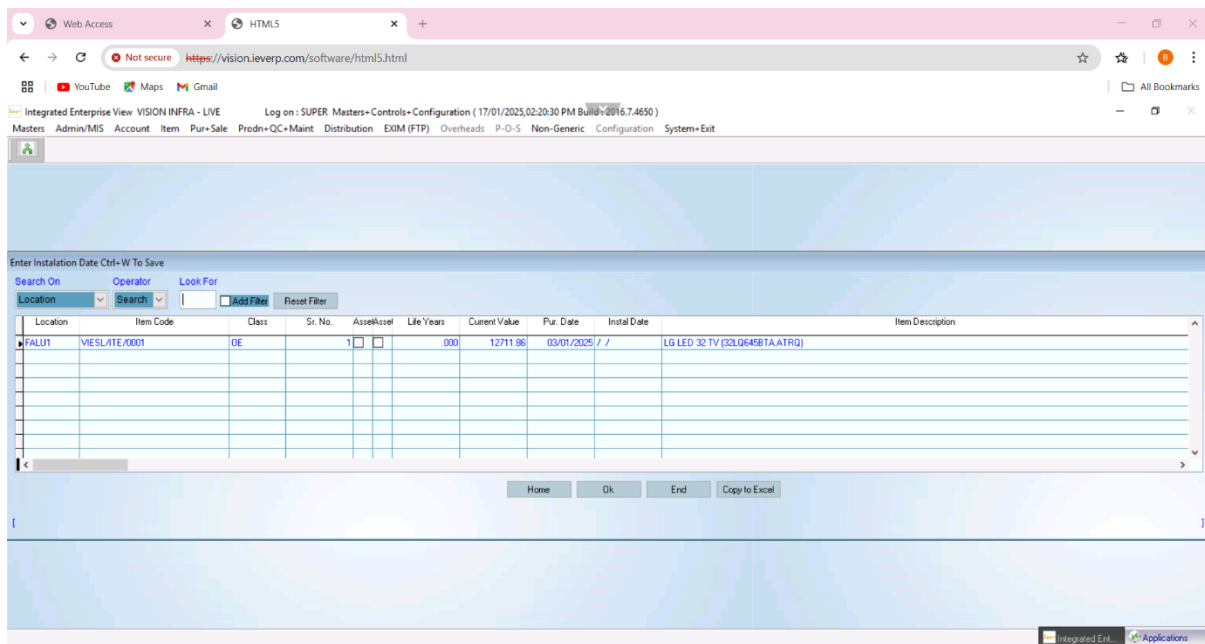
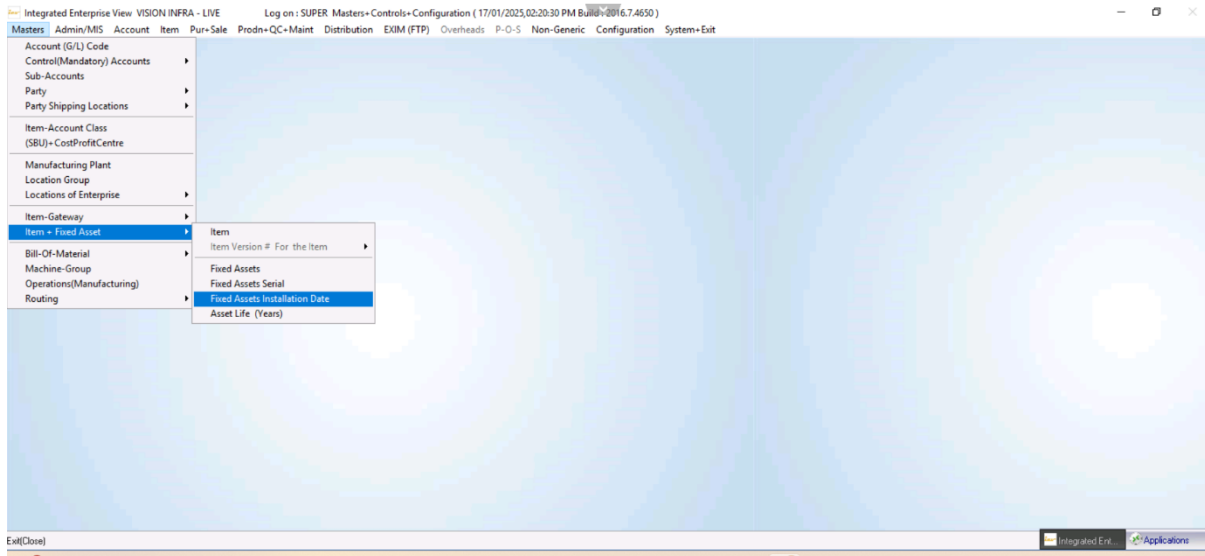
Goods Inspection Registration optionally after Q/C



Accounting (financial) transactions involving General Ledger (non item) codes other options based on item codes

# SOP of Fixed Asset Cycle

To start the depreciation please enter installation date



Thank you

## SOP of Fixed Asset Cycle